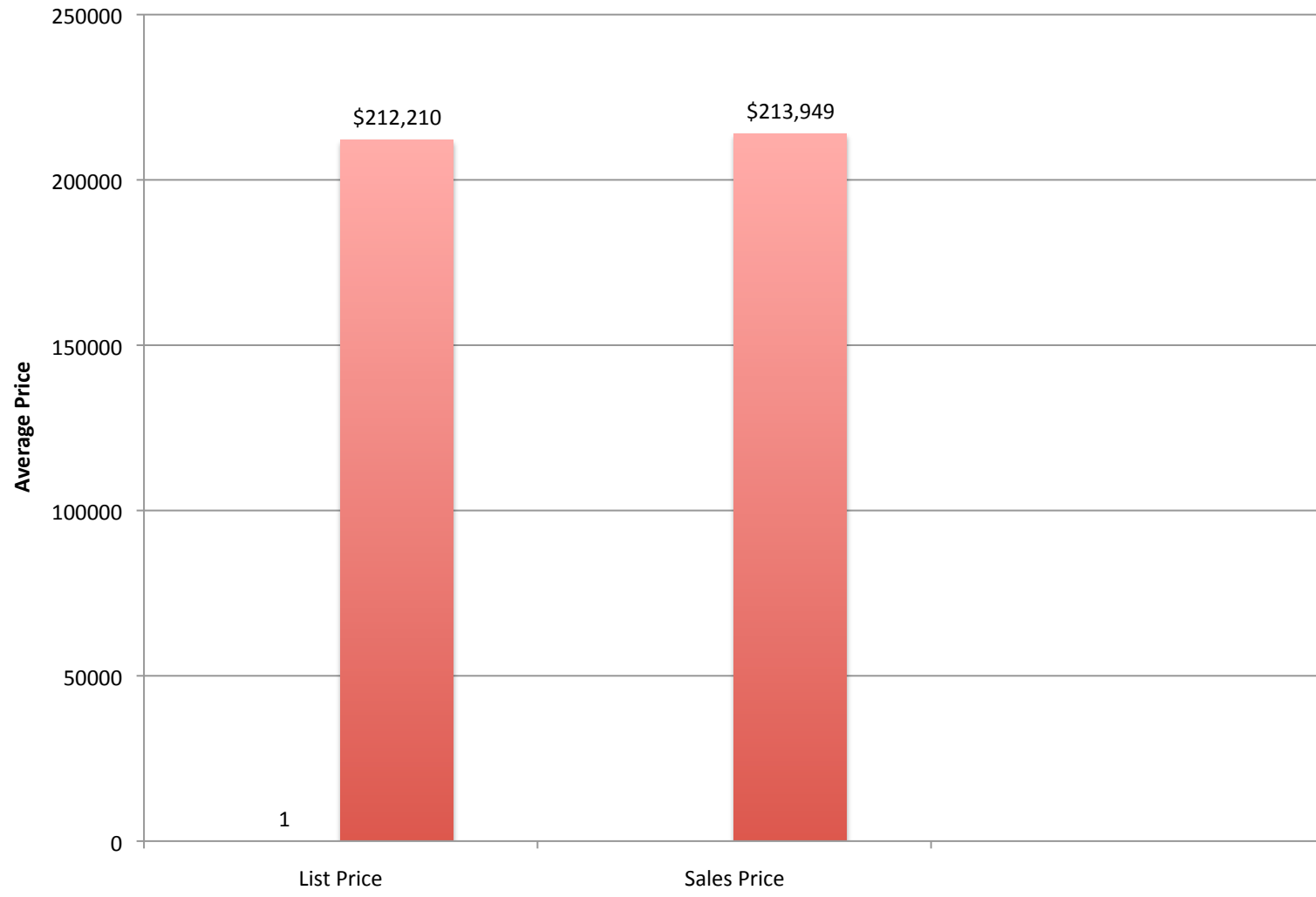
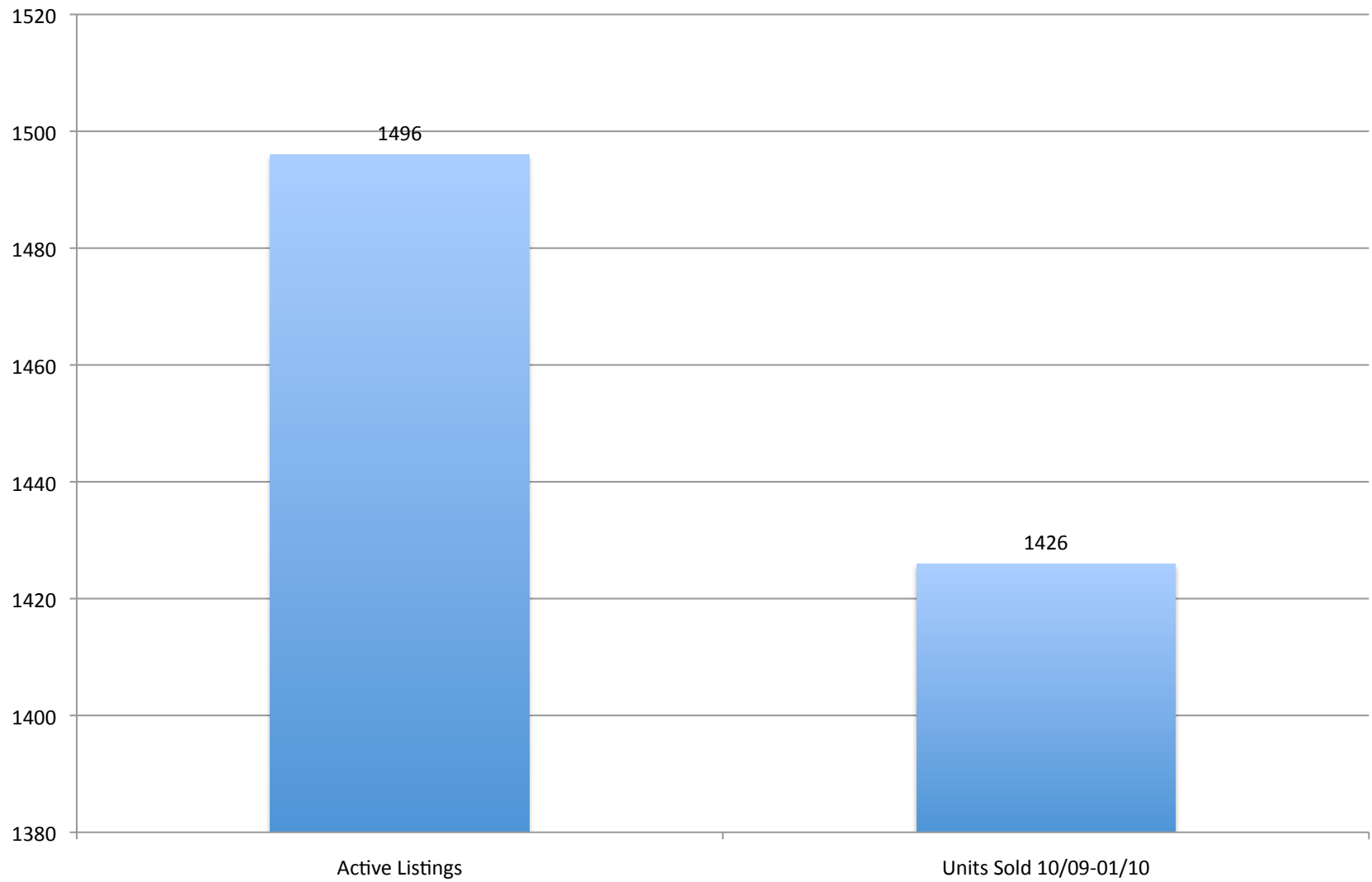


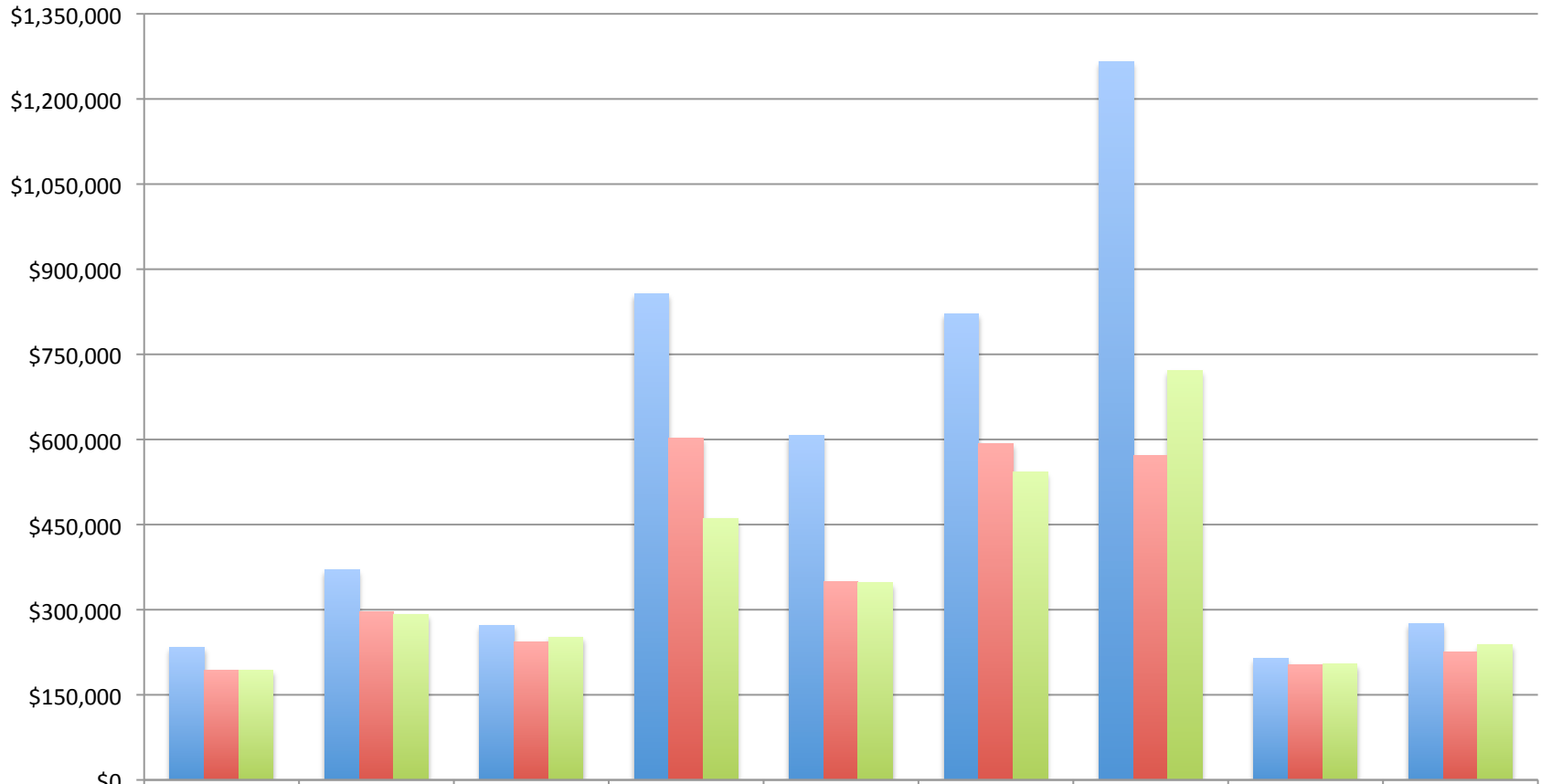
January 2010



January 2010

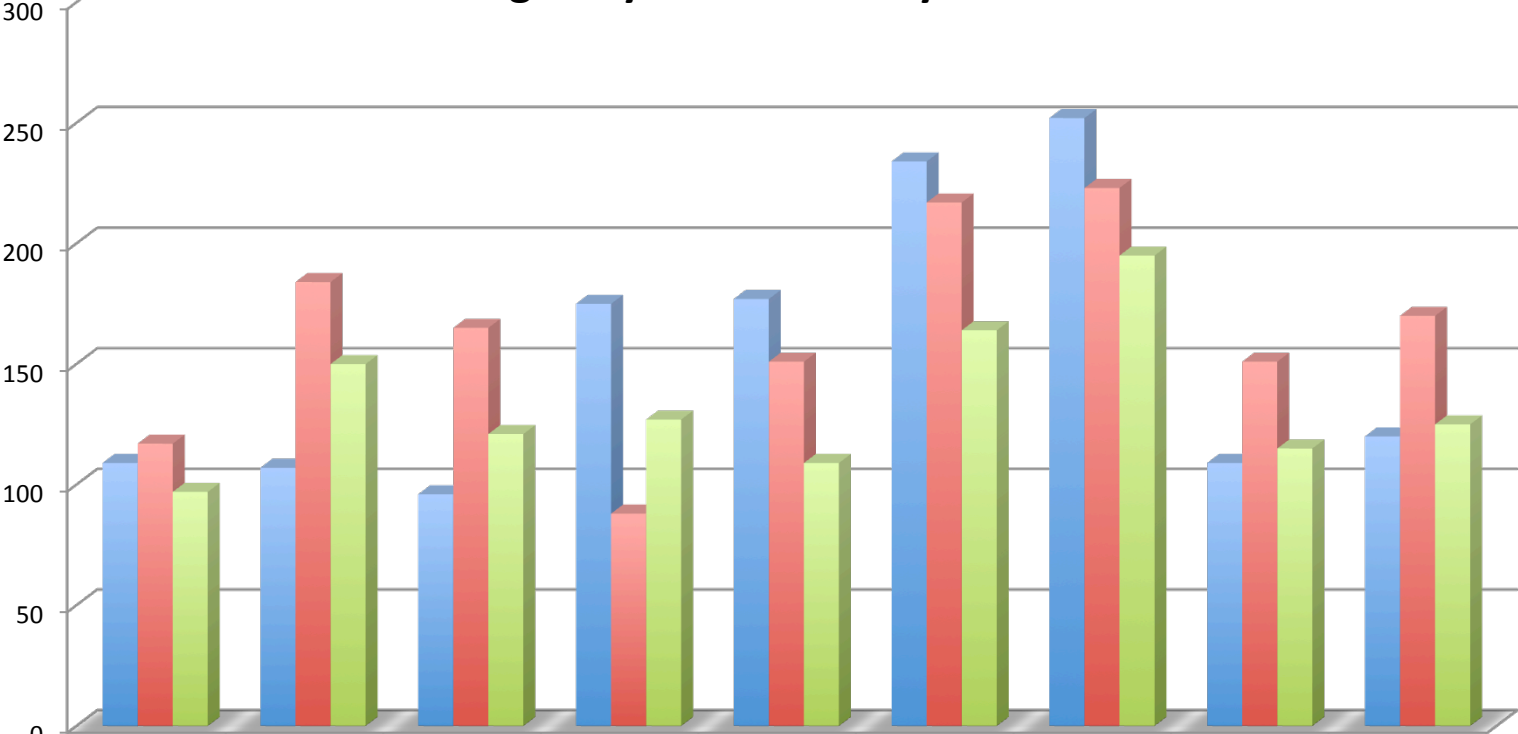


Average Price by Area



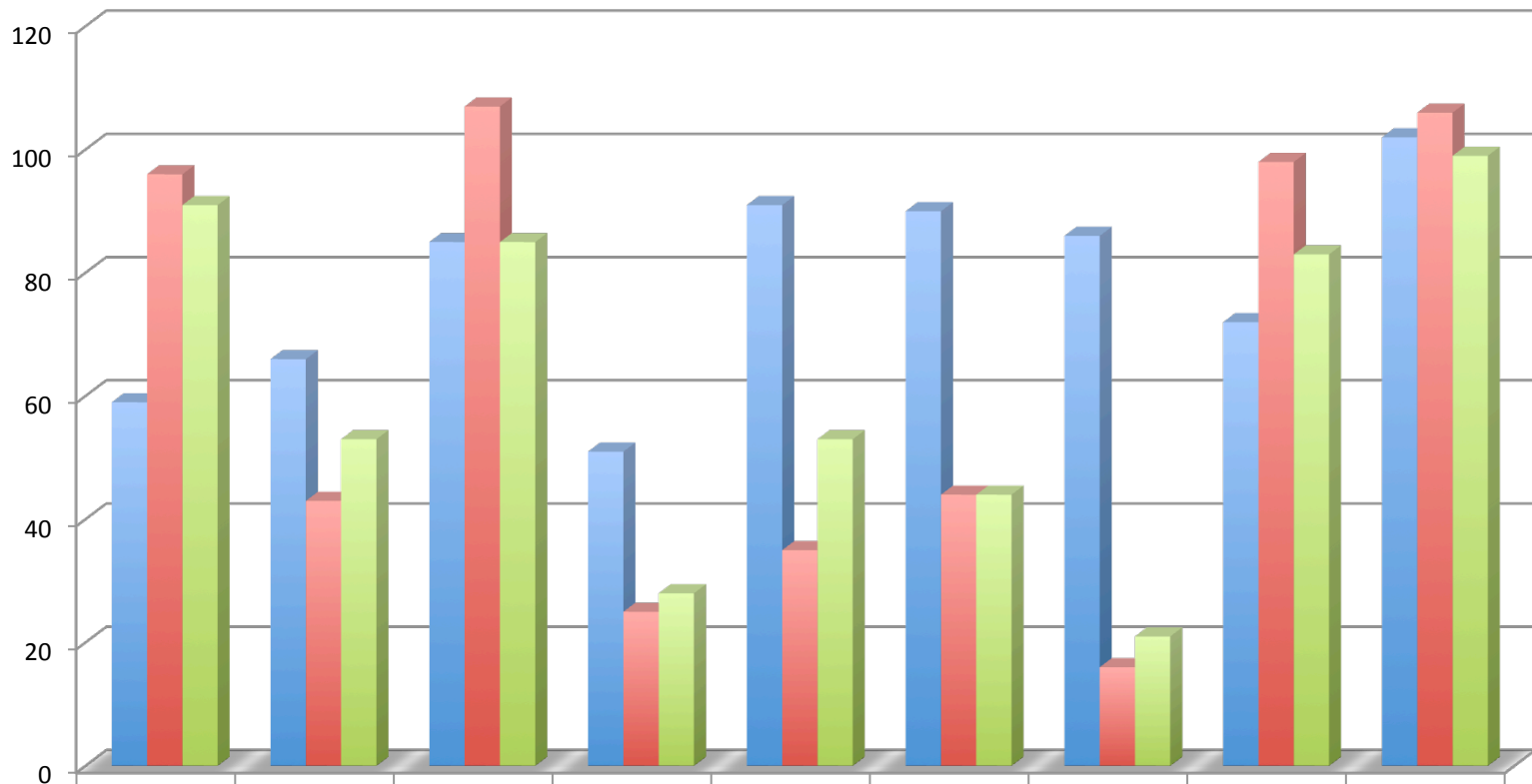
	121: NW Reno	122: Somerset	143: South Meadows	161: Caughlin	163: SW Reno	165: South Suburban	171: Galena/Montreux	182: Suburban Sparks	183: Spanish/Wingfield Springs
Active	\$233,902	\$370,574	\$272,164	\$856,345	\$607,592	\$821,649	\$1,265,676	\$214,111	\$275,399
Pending	\$193,743	\$296,531	\$243,483	\$602,314	\$349,639	\$592,647	\$572,210	\$202,194	\$224,747
Sold	\$193,825	\$291,532	\$251,841	\$460,782	\$347,257	\$542,652	\$722,257	\$204,515	\$238,637

Average Days on Market by Area



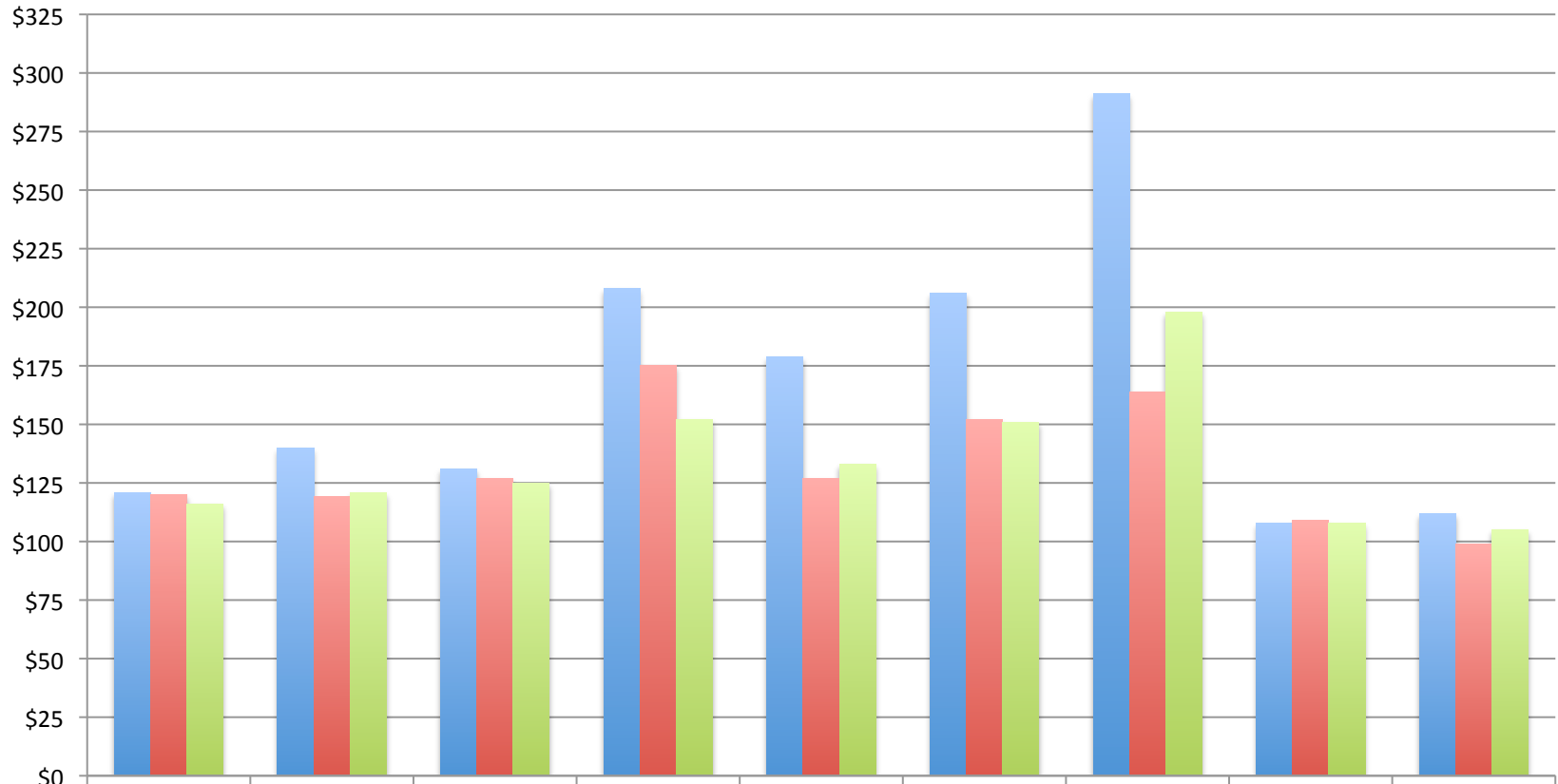
	121: NW Reno	122: Somerset	143: South Meadows	161: Caughlin	163: SW Reno	165: South Suburban	171: Galena/Montreux	182: Suburban Sparks	183: Spanish/Wingfield Springs
Active	109	107	96	175	177	234	252	109	120
Pending	117	184	165	88	151	217	223	151	170
Sold	97	150	121	127	109	164	195	115	125

Units Available /Pending/Sold by Area



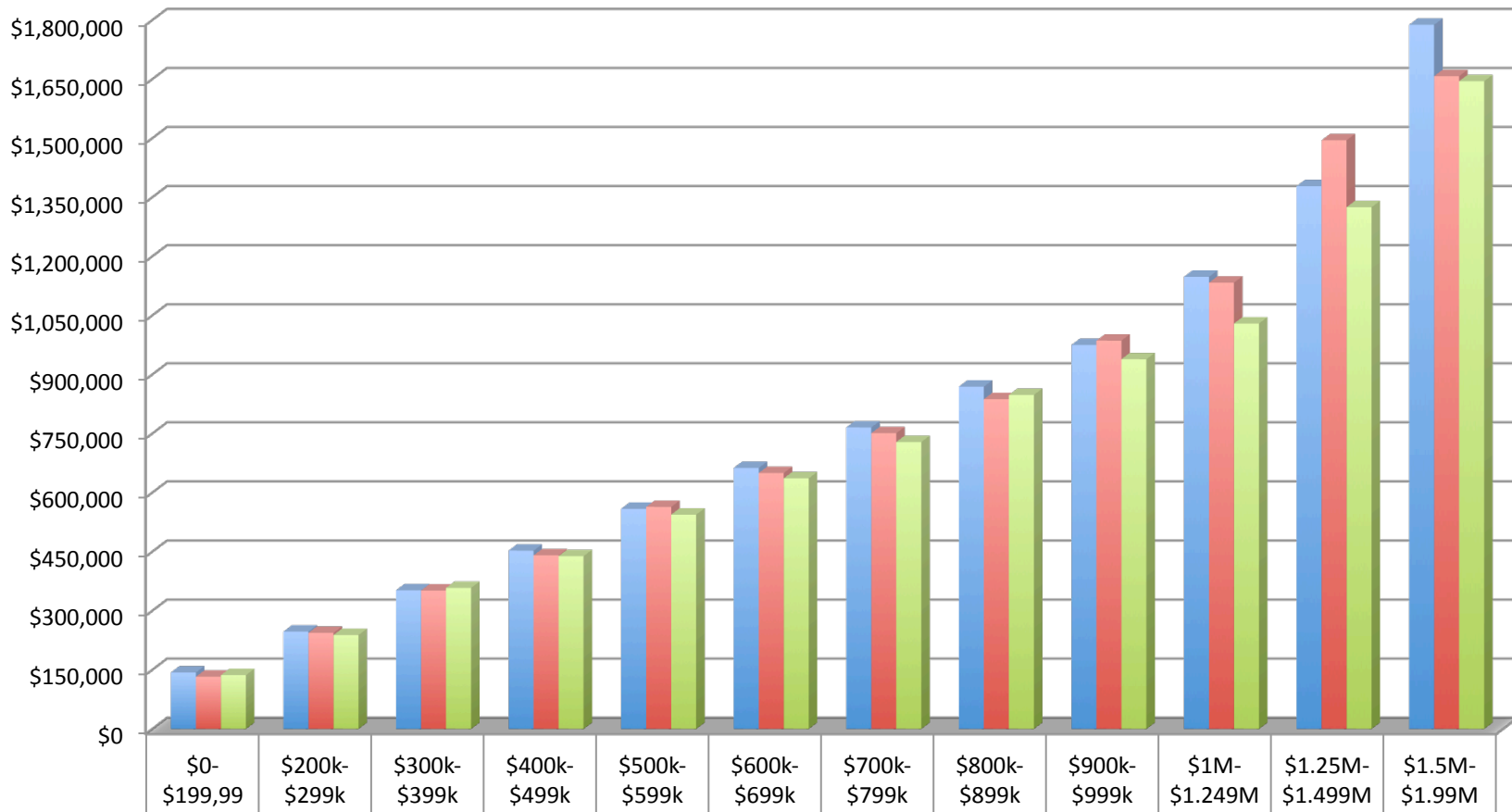
	121: NW Reno	122: Somerset	143: South Meadows	161: Caughlin	163: SW Reno	165: South Suburban	171: Galena/Montreux	182: Suburban Sparks	183: Spanish/Wingfield Springs
Active	59	66	85	51	91	90	86	72	102
Pending	96	43	107	25	35	44	16	98	106
Sold	91	53	85	28	53	44	21	83	99

Average Price/Square Foot by Area



	121: NW Reno	122: Somerset	143: South Meadows	161: Caughlin	163: SW Reno	165: South Suburban	171: Galena/Montreux	182: Suburban Sparks	183: Spanish/Wingfield Springs
Active	\$121	\$140	\$131	\$208	\$179	\$206	\$291	\$108	\$112
Pending	\$120	\$119	\$127	\$175	\$127	\$152	\$164	\$109	\$99
Sold	\$116	\$121	\$125	\$152	\$133	\$151	\$198	\$108	\$105

Market Activity by Price Point: January 2010



Active	\$143,599	\$247,340	\$352,253	\$453,000	\$559,256	\$663,000	\$765,865	\$869,387	\$975,125	\$1,148,261	\$1,378,510	\$1,788,202
Pending	\$132,672	\$244,039	\$351,676	\$440,782	\$563,957	\$649,980	\$751,113	\$837,450	\$986,225	\$1,133,380	\$1,495,000	\$1,657,800
Sold	\$136,732	\$238,478	\$358,274	\$439,009	\$544,316	\$636,495	\$728,782	\$848,326	\$939,000	\$1,029,750	\$1,325,000	\$1,645,000